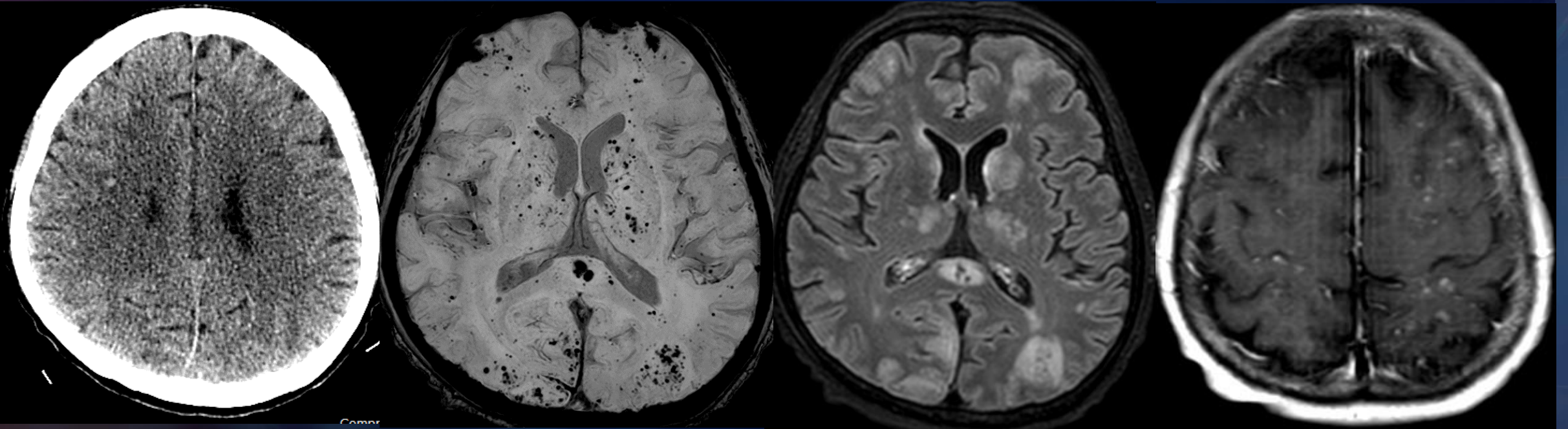


Case of the day : Case 6 - **Neuro**

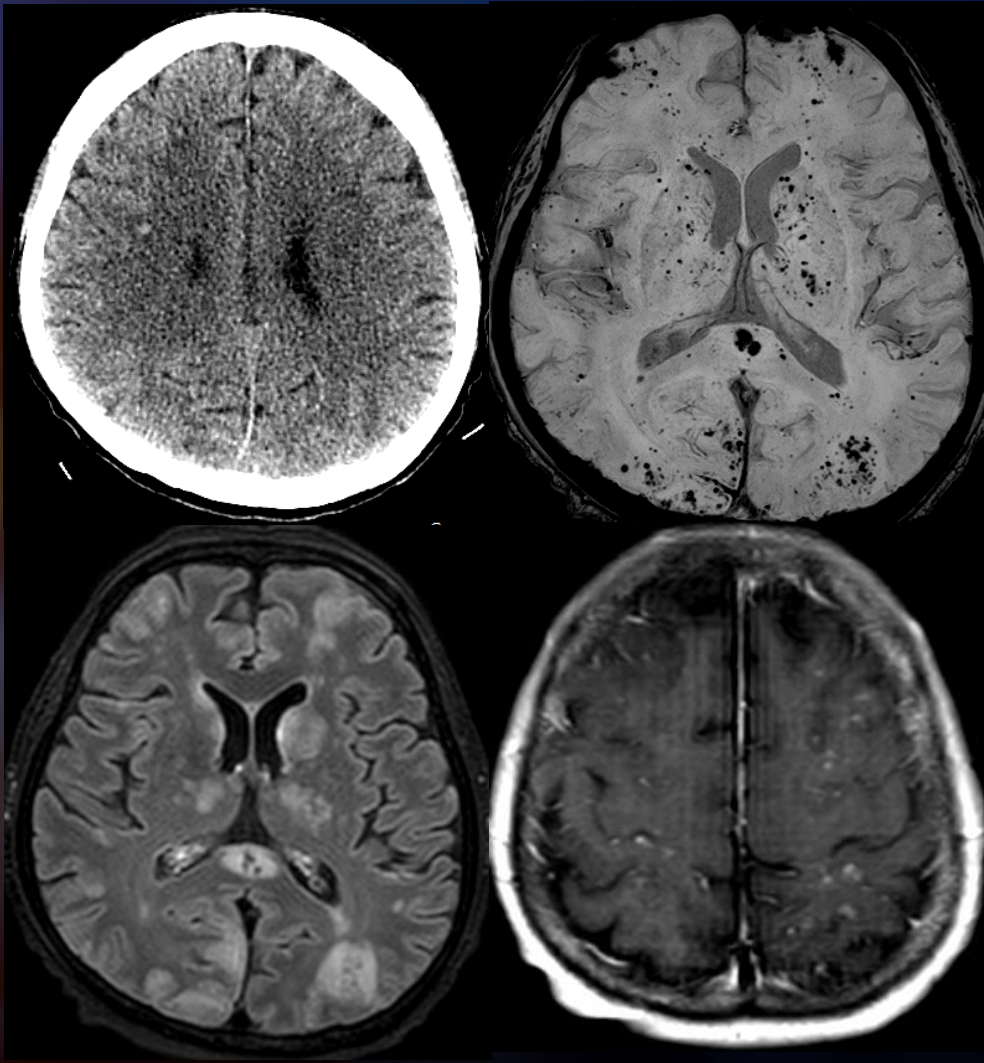
Courtesy Padcha Tunlayadechanont, MD
Radiology Department, Ramathibodi hospital,
Mahidol University, Thailand



Case of the day : **Neuro**



Case of the day : Neuro



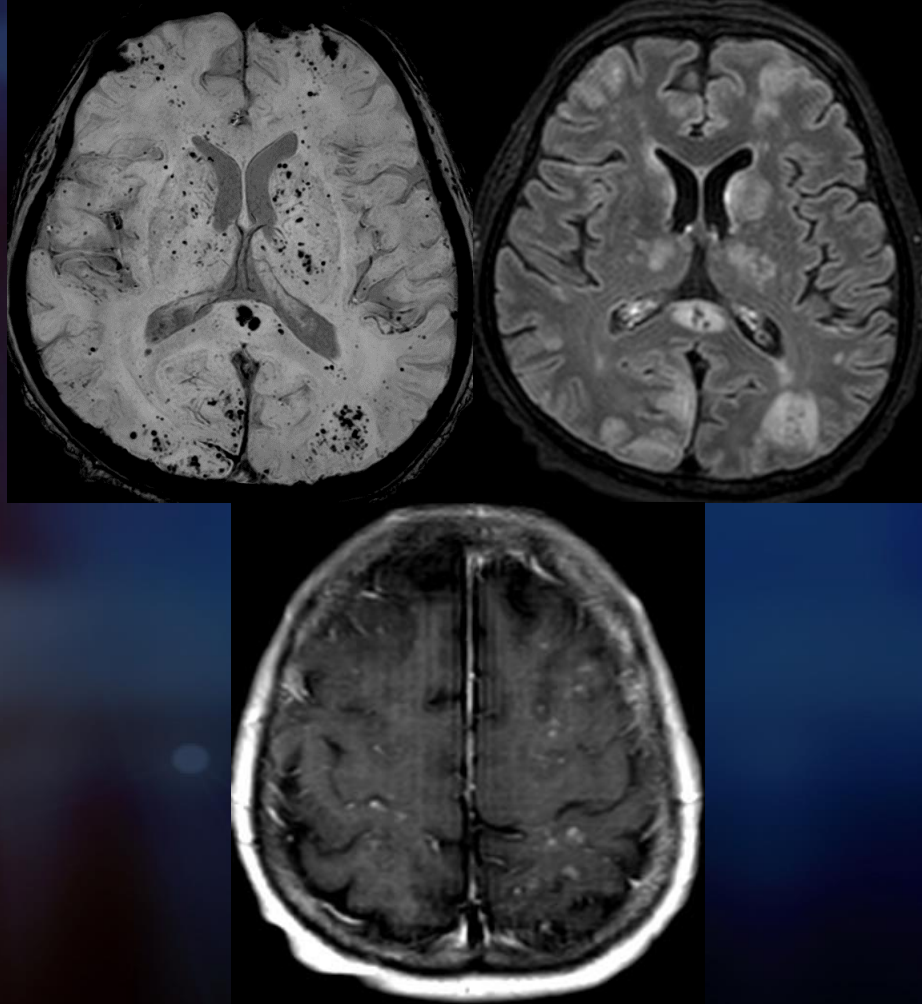
- What is the most likely diagnosis?
 - A. Diffuse axonal injury
 - B. Fat emboli
 - C. Cerebral amyloid angiopathy
 - D. Chronic myeloid leukemia**
 - E. Intravascular lymphoma

FINDINGS



- Plain CT shows few microbleeds at subcortical WM of right frontal lobe

FINDINGS



- SWI and FLAIR shows innumerable blooming foci with T2 hyperintensity throughout the brain including deep gray matter and corpus callosum, representing microbleeds
- T1 C+ shows multiple punctate enhancing lesions

Diagnosis

- Chronic myeloid leukemia



Point of Learning : Chronic myeloid leukemia

- Chronic myeloid leukemia generally in adult
- CNS leukemia are extramedullary leukemia
- Diffuse parenchymal disease is rare
- Meningeal disease is much common than parenchymal disease (“chloroma”)
- Hemorrhage is common and easily detected on T2* (GRE, SWI)
- Look for malignant deposits in skull, orbit and sinuses



References

- Osborn's Brain: Imaging, Pathology, and Anatomy. Radiology. 2017

